



Holywell Primary School

Tolpits Lane, Watford, Herts, WD18 6LL

Tel: 01923 225188 email: admin@holywell.herts.sch.uk

Headteacher: Mr Coert van Straaten MA. Ed, Dip Edu, NPQH

we are a learning community with the spirit to succeed

6th November 2020

Dear Parents/Carers

New Lockdown Measures

We have reviewed our measures in school following the latest guidance issued to us after the lockdown announcement earlier in the week. Previous guidance issued to schools is still relevant and issues have been highlighted that we will reflect in our updated risk assessment. We continue to social distance in school and follow our protocols.

COVID-19 cases are high and we need to be smart as a community to stop the spread of the virus. Parents are reminded that they are required to wear a face mask when they enter the school grounds. This is for the safety of all staff, parents, and children. As we have reached the new level of lockdown we have suspended all visitors to school for this 4 week period unless it is absolutely necessary.

We have tight restrictions limiting movement around the school for all people, and therefore the office is unable to deliver belongings to classes. Parents are asked to avoid any unnecessary visits to the school office. The office can be contacted by either telephone or email – admin@holywell.herts.sch.uk

Reception and Nursery Classes – September 2021

The on-line application system to apply for a place in Reception for September 2021 is now open. We would like to remind parents who have children born between 1st September 2016 and 31st August 2017 that they must apply for a place in a Reception class, they do not automatically transfer from Nursery to Reception.

Nursery applications, for children born between 1st September 2017 and 31st August 2018, also opened on Monday 2nd November 2020. For an application form please visit the school website <http://www.holywell.herts.sch.uk/our-school/admissions/> or call the school office.

Open Day – New to Reception – September 2020

As a result of the new lockdown measures currently in place, we have postponed our planned Open Day on Wednesday 18th November 2020. Details of the new date will follow shortly.

The Open Day for Nursery is Wednesday 6th January 2021 from 9:30am.



Tutoring - 11+

Illuminate Tuition will be using our premises, they will be in the unused building, on Saturdays to deliver tuition to pupils. For further information please contact them, details on the leaflet attached.

Questionnaire

As is custom, I ask that parents give us their views by completing our Autumn Term Questionnaire. There is a dialogue box at the bottom of the survey for parents, if they wish, to give general feedback about any current issues, for example, experience of Parents' Evening or maybe you want to tell us something good about your child's teacher or learning. I am looking forward to receiving your views.

<https://www.surveymonkey.co.uk/r/N95DJDM>



School Photographer

The School Photographer will be here on Thursday 12th November 2020 to take individual photographs of the children. As a result of the current social distancing rules and class bubbles, this year we are unable to take sibling and family photographs. If the weather is fine the photographs will be taken outside in the playground. If this is not possible they will be taken in the unused building. We will stick strictly to our class bubbles and the one way system when entering and leaving the building.

Parking

We have had a complaint from a neighbour on Tolpits Lane regarding the inconsiderate and unsafe parking by a few of our parents. It is regrettable, but if things do not improve we will have no option but to ask the local Traffic Wardens to attend before and after school. Obviously we do not want to have to take such action and ask for everyone's co-operation.



Self-Isolating

Parents are requested to notify the school if they need to self-isolate because of Coronavirus. The school has set up remote learning that pupils can access if they need to stay at home. Once the school has been notified, the class teacher will contact parents and let them know how to access the learning. If remote learning is not possible then we will make alternative arrangements.



**WATFORD
BOROUGH
COUNCIL**

A message from Peter Taylor Elected Mayor of Watford

We are entering a critical phase of the Covid-19 pandemic. Across Watford more and more people are testing positive with the virus. We are also seeing the impact of these increasing infection rates on Watford General Hospital as people from our community are falling seriously ill and are needing hospital care.

We know that this virus has already taken the lives of many loved ones in Watford and we must act now to keep our communities safe, reduce the strain on our precious local health services and prevent the need for further restrictions in our town. These restrictions would limit people being able to see friends and family and put another major pressure on our local businesses just when they are doing all they can to keep going and protect people's jobs and livelihoods.

We have a small window to make a difference. Covid-19 continues to pose a big risk to ourselves and those we come into contact with, especially the most vulnerable in our communities. We must do all that we can to protect people and help keep the numbers under control.

It is vital that we all:

- . Limit contact with other people
- . Follow the guidance on meeting with family and friends
- . Wash our hands regularly
- . Wear a face covering whenever required
- . Keep our distance from others.

The Council continues to work closely with Hertfordshire County Council, other Hertfordshire districts and boroughs, our partners in the NHS and other emergency services to do everything we can to halt the spread. But we cannot do this alone. Ultimately, there is a role for everyone here and now is the time to step up and all do our bit for Watford.

HOLYWELL STAR LEARNERS		
Blue	Karina	This is awarded for her improved counting in English
Red	Makanaka	For beginning to write sentences with very little support
Sycamore	Jah'Neza	For trying hard during maths when learning about subtraction and the part whole model
Maple	Evaniya	For participating well in maths
Hawthorn	Zainab	For trying her best in all her learning this week and using her phonics in her writing
Hazel	Zarya	For her fantastic fact file about Christmas
Cedar	Alizah	For an excellent effort all week in maths and for solving word problems with arrays
Mulberry	Harley	For showing a positive attitude towards his learning all week
Rowan	Shailah	For including detail and using a thesaurus when writing a setting description
Chestnut	Tiana	For writing a lovely descriptive piece of writing about her room
Elder	Chloe-Mae	For giving 100% in everything that she does and for being an amazing role model all of the time - Chloe-Mae has returned to school this year mature and motivated to embark on any challenge. Well done Chloe-Mae!
Elm	Zamin	For his excellent work comparing fraction
Birch	Leo	For working independently in maths sessions to simplify and order fractions

HOLYWELL CHARTER CERTIFICATES		
Blue	Godfrey	This is awarded for following our classroom rules
Red	Aisha	For being a very polite and kind friend
Sycamore	Zakariya S	For reflection on his emotions and behaving responsibly inside of the classroom
Maple	Emma	For being reflective in learning her lines
Hawthorn	Arash	For working independently to sequence and explain the story of 'Coming to England'
Hazel	Sofia	For being a positive role model when practicing for our class assembly
Cedar	Khaira	For an excellent attitude all week and for showing the 6 Rs
Mulberry	Grace	For reflecting on her behaviour in class and showing a great attitude
Rowan	Adam	For being a reflective and thoughtful learner in English
Chestnut	Ibrahim	For reflecting on solving equal sum calculations including decimals
Elder	Megan	For fantastic listening and reflection when challenging herself with her maths work - I have had to set additional challenges for Megan this week beyond the 4 I had already set! Brilliant maths learning and reflection this week.
Elm	Chloe	For always following the 6Rs
Birch	Ismaeel	For always reflecting on 6Rs in his learning and behaviour

Friday 13th November 2020



Wear spotty clothes to show your support.



Pay £1 via the school online payment.



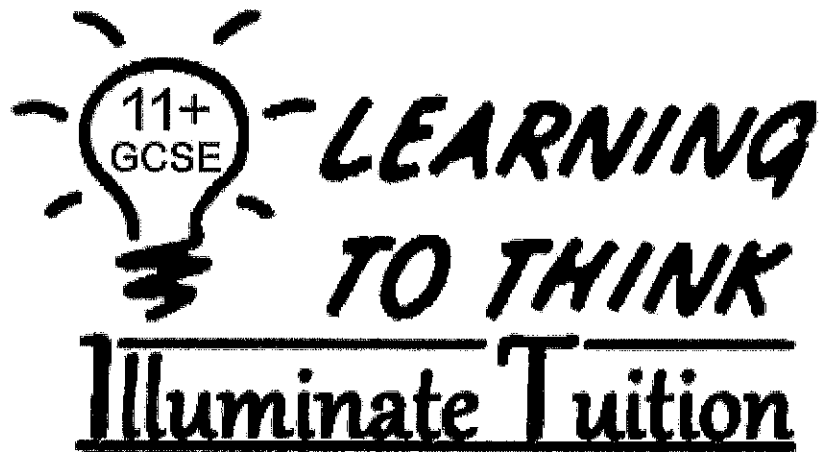
SEND Advice for Parents/Carers

*Helpful SEND advice lines
for Parents and Carers*

Advice line	Times available (from Sept 2020)
Educational Psychology Contact line 📞 01992 588574	Weds 2pm – 4:30pm
SEND Specialist Advice and Support Service* 📞 01442 453920 - term time only	Specific Learning Difficulties: Mon & Thurs 09:30am – 12pm
	Speech Language, Communication & Autism needs: Tues & Weds 1:30pm – 4pm
	Early Years: Weds 9am – 12pm Thurs 1:30pm – 4pm
West team Attendance Duty* 📞 01442 454778	Mon - Fri 09:30 am – 4pm
East team Attendance Duty* 📞 01992 555261	Mon - Fri 09:30 am – 4pm

* also available to schools, settings and professionals

To access a range of learning resources
please click [here](#)



We are in Holywell Primary School

Year 4 and Year 5

Online & Classroom Lesson

Tel:07940058969

Website:www.illuminatetuition.co.uk

Email:info@illuminatetuition.co.uk



ADD-vance

The ADHD and Autism Trust

Website: www.add-vance.org
Email: herts@add-vance.org
Phone: 01727 833963

NEWSLETTER
Winter
2020

At ADD-vance we are passionate about supporting families!

This is because all our Specialist Trainers and Coaches have first-hand experience of living with ADHD, Autism and related conditions. In our opinion, nobody understands living with additional needs more than parents and carers who 'walk the walk' every day! But sometimes we all need a helping hand, whether that's a simple chat or something a bit more structured. We want to help you develop plans and strategies that work for your family. Get in touch to find out more about our range of services in Hertfordshire.

Need someone to talk to about ADHD or Autism?



Please call the ADD-vance
Telephone Helpline
01727 833963

For parents and professionals

Lines are open from 9am-1pm Monday to Friday

Alternatively you can email herts@add-vance.org

Need information or support right now?



Please post your query on the
ADD-vance Private Facebook Page
and get ideas from over 4500
parent and professional members of ADD-vance!

To join the group click:
<http://www.add-vance.org/parents/>
and follow the Facebook link.
You will be asked 3 simple questions
to verify your identity.

The group is moderated by
Specialist Family Coaches and Trainers from ADD-vance.

Please note, this is not an emergency service.

Want to understand your child better?



Please sign up for one of our
FREE ONLINE Six-Week Courses
funded by Herts County Council.

Nine courses will be running from
w/c 2 November 2020
*including one specifically for dads
one for parents of girls and
two for parents of teens.*

Courses will be delivered via Zoom with
a maximum of 12 participants per group.

Find out more and book your place at:
<http://add-vance.eventbrite.com/>

Worried about your child ?



Please join us for our weekly
FREE ONLINE Support Groups
every Tuesday evening 19:30-20:30

We have separate groups for:
Parents of primary-aged children
Parents/carers of secondary-aged children
Parents/carers of young people aged 15-25 yrs

Maximum 10 participants per group.

Find out more and book your place at:
<http://add-vance.eventbrite.com/>

We are delighted to announce our new programme of **FREE ONLINE Workshops for Parents/Carers**

running from October 2020 to March 2021 funded by Hertfordshire County Council.

These interactive workshops will be delivered via Zoom and can easily be accessed via a PC, laptop, tablet or smartphone. For more details and to book your FREE ticket, please see <http://add-vance.eventbrite.com/> or visit our Facebook page.

'I feel so much better prepared
for what lies ahead'

THE SEND JOURNEY WORKSHOPS

Identifying ADHD and/or Autism in your Child
Caring for your Neurodiverse Child (and Yourself!)
Working in Partnership with School to Support your Neurodiverse Child
Applying for an EHCP for your Neurodiverse Child
Preparing for an EHCP Annual Review for your Neurodiverse Child
Supporting Siblings
Support for Dads
Managing the transition to Primary School
Managing the transition to Secondary School
Preparing Neurodiverse Young People for Adulthood (14+)
Preparing Neurodiverse Young People for Adulthood (16+)
Preparing Neurodiverse Young People for Adulthood (18+)

PSYCHO-EDUCATION WORKSHOPS

Understanding ADHD
Understanding Autism
Understanding Pathological Demand Avoidance (PDA)
Understanding Sensory Differences
Understanding ADHD in Girls
Understanding Autism in Girls
Understanding Challenging Behaviour
Understanding Anxiety
Understanding Teens with ADHD/Autism

'I finally understand
my child!'

'I have some great new
ideas to try at home'

SKILL-BUILDING WORKSHOPS

Tips and tools to build your child's self-esteem
Tips and tools to help your child manage sensory differences
Tips and tools to support communication with your child
Tips and tools to teach your child about emotions and self-regulation
Tips and tools to help your child deal with change (transition)
Tips and tools to support your child's learning (executive function)
Tips and tools to teach your child social skills
Tips and tools for managing anxiety
Tips and tools for managing anger
Tips and tools for positive behaviour
Tips and tools for toileting
Tips and tools for sleep
Tips and tools for supporting your child through puberty
Tips and tools for managing self-harm

Wondering if you or your child has ADHD?



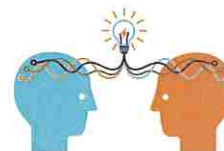
Please book in for a
QbCheck at ADD-vance.

This online test measures the
three core symptoms of ADHD.

It provides objective data which can help
parents & professionals evaluate and manage ADHD.

Visit www.add-vance.org/adhd_service/qbcheck/
for more information or to arrange a booking.

Feeling stuck as a family?



Please enquire about the ADD-vance
Family Coaching Service
currently being delivered online via Zoom.

For tailored one-to-one support
to move your family forward
email coaching@add-vance.org
to discuss the options and costs.

Need help with your EHCP application or annual review?



Get in touch to arrange a consultation with
Bridget Livsey – EHCP Specialist Advisor.

Email coaching@add-vance.org
for more information and costs.

Does your organisation need to learn more about neurodiversity?



We offer a range of workshops as well as
Bespoke Training and Consultancy
based on the latest research and best practice.

Whether you're looking for a brief seminar
or a full-day of interactive learning
email us at training@add-vance.org
to discuss your needs.

**Shine as bright
as car lights**

**PLAY
YOUR
PART**



Be safe be seen

**During the dark Autumn
and Winter months
pedestrians can often
become invisible to drivers.**

**Always remember to be
bright and reflective when
walking, cycling or running
at night.**